



# Sport Exhaust

## Installation Instructions

### Austin-Healey Sprite/MG Midget

PART # 452-016

440 Rutherford St. Goleta, CA 93117  
1-800-667-7872 • FAX 805-692-2525 • www.MossMotors.com

#### Tools required:

- Safety goggles
- Locking pliers (needle nose or smaller pliers are easier to work with)
- Soft-faced dead blow hammer
- ½" deep socket (⅜" drive)
- ⅜" Drive Ratchet
- ½" Wrench
- 14mm Deep Socket



#### Warning:

**Always use jack stands to support the weight of the vehicle. Never rely on jack alone.**

**Always wear eye protection when working underneath the vehicle, especially when installing collector hold-down springs.**

- 1) Support vehicle safely on lift or jack stands.
- 2) Remove Stock exhaust (consult factory service manual for details). Factory exhaust hangers will be reused. Inspect hangers and replace if necessary (Moss Motors Part # 614-008)
- 3) Install new gasket to cylinder head. (Moss Motors Part #296-630)
- 4) Separate the header from the collector. Install header only onto engine and tighten outer nuts. Figure 4.

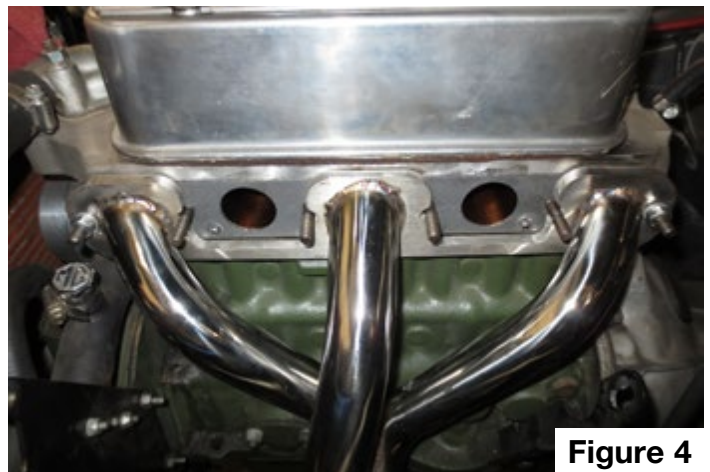


Figure 4

- 5) From underneath the vehicle push collector up on to the header. Figure 5.



Figure 5

## Installation Instructions

- 6) Wear safety goggles during this step in case a spring gets loose. Secure collector to header using the provided springs. Install the springs by hooking onto one end and stretching the free end of the spring into the other hole using locking pliers. The inner springs are more easily installed from underneath while the outer springs are installed from the top. Figure 6.



**Figure 6**

- 7) Working underneath the vehicle install the straight pipe into the collector. Using the soft-faced hammer, tap the pipe into the collector until it is fully seated. Install and tighten down the band clamp.
- 8) Install the intermediate pipe, tap into place and install band clamp. Slide on the intermediate pipe hanger and attach to the factory exhaust mount. Figure 8.



**Figure 8**

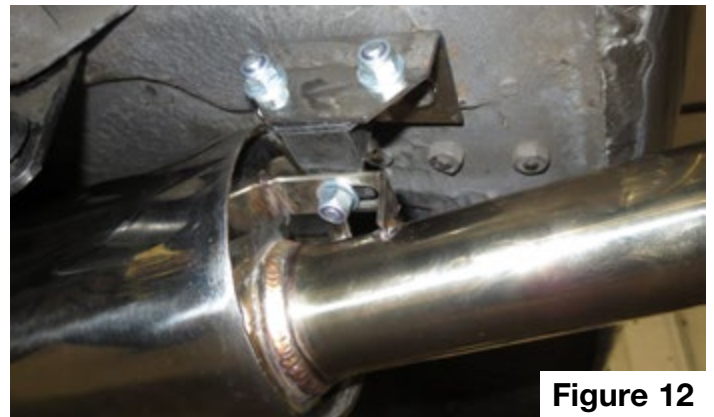
- 9) Remove the factory tailpipe exhaust hanger and install the supplied bracket using the factory bolts.

- 10) Re-install the factory tailpipe hanger to the bracket as shown. Figure 10.

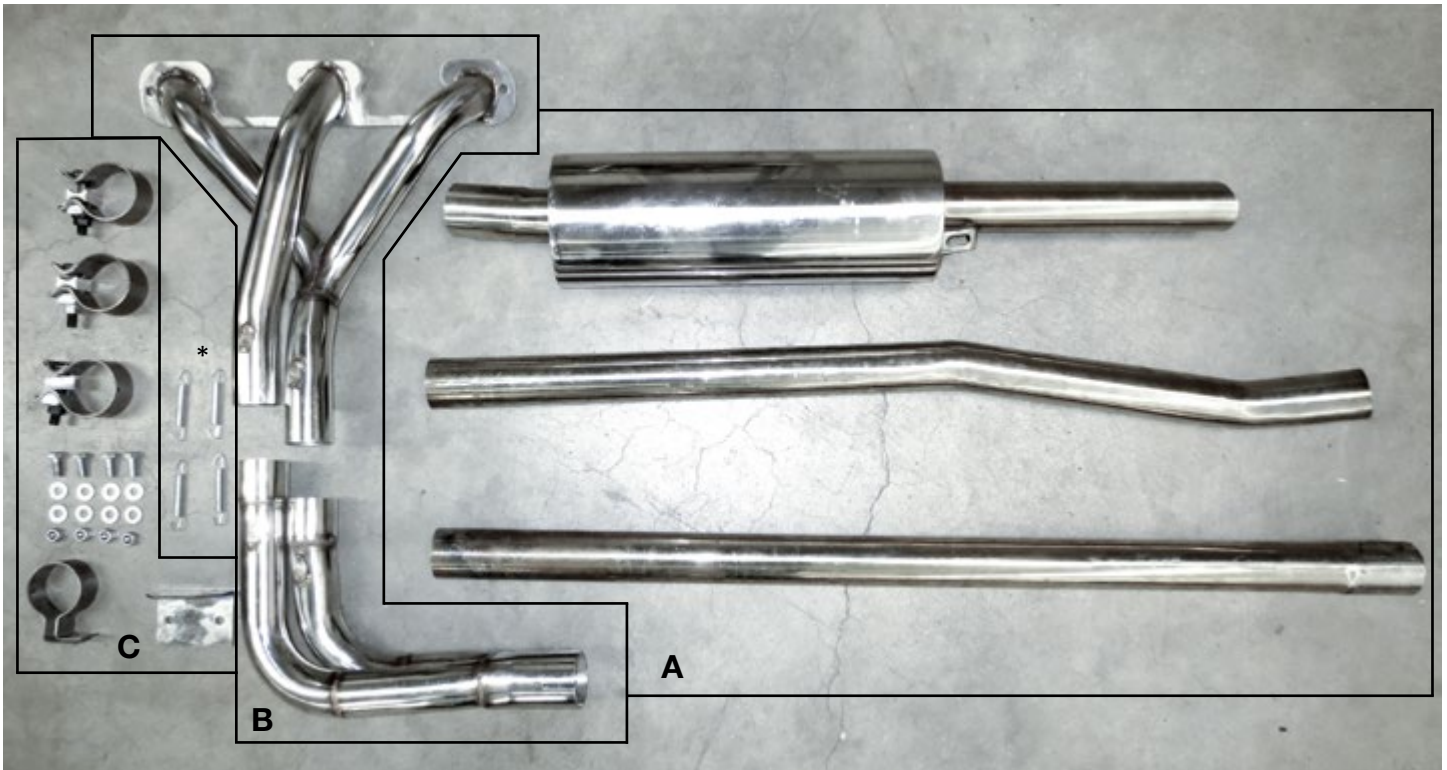


**Figure 10**

- 11) Install the muffler into intermediate pipe, tap with hammer to seat and secure with band clamp.
- 12) Secure muffler/tailpipe assembly to hanger using the supplied hardware. Figure 12.



**Figure 12**



BOM 452-016		
A	452-016	EXHAUST SYSTEM, SPORT W/HEADER
B	452-017	HEADER, STAINLESS STEEL
C	452-018	KIT, EXHAUST HARDWARE
* 4X Springs are included with all 3 part numbers above and not available separately.		

*Although every effort has been made to ensure the accuracy and clarity of this information, any suggestions that you may have that will improve the information (especially detailed installation notes and photos) are welcome. These instructions were developed and written by Moss Technical Support. If you have any questions or difficulties with your installation of this product, telephone 800-667-7872 between 7:00 a.m. and 4:00 p.m., Pacific Time for assistance.*

**Moss Motors, Ltd.**  
 440 Rutherford Street, Goleta, California 93117  
 In the US & Canada Toll Free (800) 667-7872  
 LOCAL (805) 681-3400 FAX (805) 692-2510



**Moss Europe Ltd.**  
 Hampton Farm Industrial Estate  
 Hampton Road West, Hanworth Middlesex, TW13 6DB  
 In the UK: 020-8867-2020 FAX: 020-8867-2030